

# CONNECT FOUR WITH VA FCCLA THIS YEAR!

## NOVEMBER

### Personalized Pumpkins

Create, bake, or decorate  
an edible or non-edible  
pumpkin



**DUE: NOVEMBER 30TH**

## JANUARY

### Plentiful Platters

Design a platter filled with  
edible or non-edible items  
of your choice

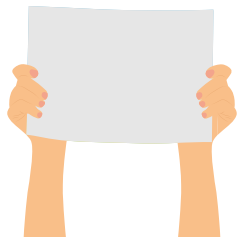


**DUE JANUARY 31ST**

## MARCH

### Dedicated Displays

Make a display for FCCLA  
week and CTE month



**DUE MARCH 5TH**

## YEARLONG CHALLENGE

### Picture Perfect Photos

Submit photos each  
month of chapter activities



**DUE MARCH 15<sup>TH</sup>**

**SUBMIT AT LEAST ONE ENTRY IN ALL FOUR CONTESTS TO  
BE ENTERED FOR A CHANCE TO WIN A CHAPTER PRIZE!**